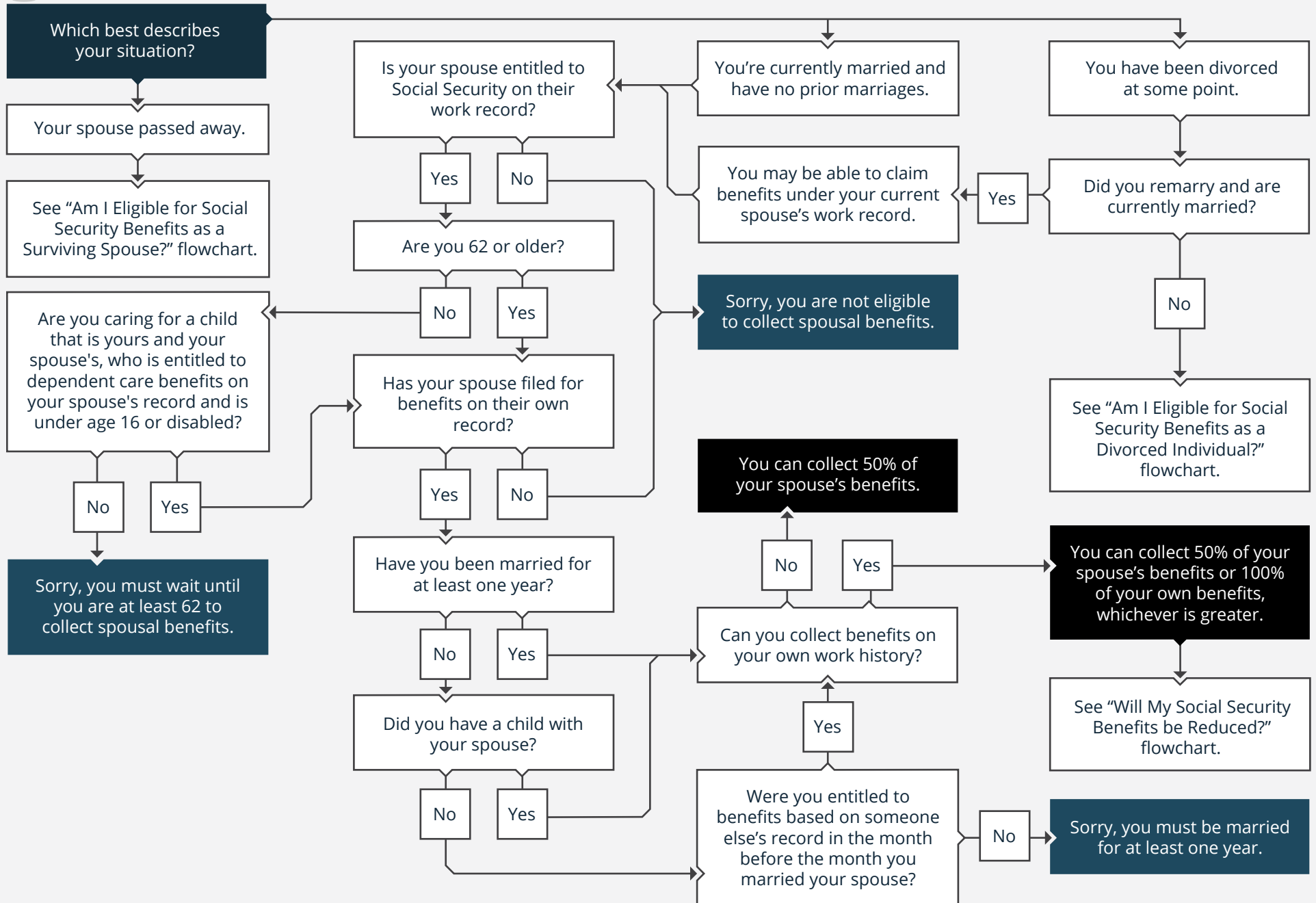


2020 · AM I ELIGIBLE FOR SOCIAL SECURITY BENEFITS AS A SPOUSE?



Start Here



Disclosures: Taylor Hoffman is an SEC registered investment adviser with its principal place of business in the State of Virginia. Any references to the terms “registered investment adviser” or “registered,” do not imply that Taylor Hoffman or any person associated with Taylor Hoffman have achieved a certain level of skill or training. Taylor Hoffman may only transact business in those states in which it is registered /notice filed, or qualifies for an exemption or exclusion from registration /notice filing requirements. For information pertaining to the registration status of Taylor Hoffman or for additional information about Taylor Hoffman, including fees and services, please visit www.adviserinfo.sec.gov.

Taylor Hoffman Wealth Management

1802 Bayberry Court, Suite 101, Richmond, VA 23226
resources@taylorhoffman.com | (804) 414-0200 | www.taylorhoffman.com